



# Eltville am Rhein

Published by

## **Tourist-Information und Kulturamt Eltville am Rhein**

Rheingauer Straße 28, D-65343 Eltville am Rhein  
Phone (+49)6123 90 98-0, Fax (+49)6123 9098-90  
E-Mail: [touristik@eltville.de](mailto:touristik@eltville.de), Internet: [www.eltville.de](http://www.eltville.de)

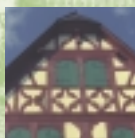
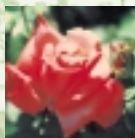
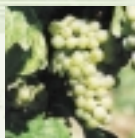
The tourist-information Eltville is open year-round from Monday to Saturday. For exact opening hours please contact us at the mentioned address.

Further information on the region Rheingau-Taunus is available at the **Rheingau-Taunus Information**

An der Basilika 11a, D-65375 Oestrich-Winkel  
Phone: (+49)6723 9955-0  
E-Mail: [tourist@rheingau-taunus-info.de](mailto:tourist@rheingau-taunus-info.de)  
Internet: [www.rheingau-taunus-info.de](http://www.rheingau-taunus-info.de)

The information provided in this brochure is given without warranty and may be subject to change.

©2008



Where the Rheingau  
enchants your senses



**ELTVILLE AM RHEIN**  
WEIN-, SEKT- UND ROSENSTADT

# "alta villa"

## Oldest City in the Rheingau

Welcome to Eltville am Rhein, the city of wine, sparkling wine (Sekt), and roses. It is ideally located between forest, vineyards, and the Rhine River.

The name "Eltville" probably goes back to "alta villa," which means "an elevated settlement" in Latin and stands for the city's long history.

Eltville was granted its official town status in 1332, thereby making it the oldest town in the Rheingau region.

Discover the countless sights of interest in the heart of Eltville and in the surrounding villages of Erbach, Hattenheim, Martinsthal, and Rauenthal.

Let the charm of each place enchant your senses.

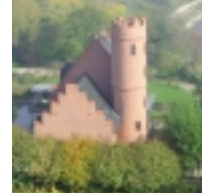
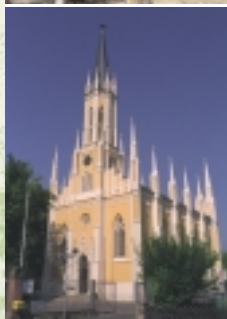


### Landmark

Eltville's Electors Castle is the city's famous landmark and was built in the first half of the 14th century. It once was the residence of the archbishops and electors of Mainz. Today it invites visitors to wander through the courtyard, castle moat, and beautiful rose garden. Many festivals and cultural events take place here throughout the year.

### Gutenberg

The citizens of Eltville are proud to live in a town that once had one of the world's first printing factories. The Gutenberg memorial and exhibition in the castle tower is dedicated to the inventor of book printing with movable letters. It was here that in 1465 he was granted the title "Hofmann" by archbishop Adolf of Nassau II. The "man of the millennium" is not only part of Eltville's past - his legacy is kept alive until today.



Crass Castle, the oldest building in town (11th century)  
Martin's Gate, the only remaining town gate

### Half-Timbered Architecture

During a stroll through the winding, medieval alleys in the Old Town of Eltville you will discover countless charming half-timbered houses and impressive noble estates. Four-hundred years of architectural history come to life. The half-timbered architecture is extremely well preserved and thanks to an extensive restoration project most houses today display perfectly their original look from hundreds of years ago. Eltville is a member of the "Deutsche Fachwerkstraße" (Germany's association for half-timbered architecture).

### Erbach

The gracious Johanneskirche, donated by Princess Marianne of Preussen, is visible from far away. Schloss Reinhartshausen was built in the mid-18th century and was acquired by the princess in 1855. Today it houses a luxurious 5-star conference hotel.

### Hattenheim

This wine village on the banks of the Rhine River features a well-preserved medieval town centre. History comes to life among the richly decorated half-timbered houses and ornamental paintings, the former town hall and the impressive fortress with its 11th century spire.

### Martinthal

Martinthal was founded in 1363 when the citizens of the „Rode village“ moved behind the legendary boundary fortification of the Rheingau. Today this little village invites visitors to wander through its streets and drop into one of the many local taverns, such as Weinhaus Krone. This ornate half-timbered building from the 16th cent. formerly functioned as a town hall, a bakery, and a tavern. The small Gothic church is used today as a location for cultural events.

### Rauenthal

Rauenthal, located 270 meters above sea level, has maintained its character as a wine village. Many visitors like it because of its idyllic church square, the wine taverns, and the hiking trails. A walk up to the "Bubenhäuser Höhe" will reward you with a fantastic view of the surrounding countryside.

# Wine Culture

In the footsteps of an old tradition

“The Rhine region, that rich tract of land, is one of the loveliest on the inhabited earth.”

That is what the character Felix Krull exclaims in one of Thomas Mann's novels.

The son of a local sparkling wine manufacturer raves about his home town.

It makes his heart melt just to hear the name.

## Vineyards

The vineyards of Eltville and its neighbouring villages have promising names: “Eltviller Sonnenberg” (sunny mountain), “Erbacher Marcobrunn” (Marco's fountain); “Hattenheimer Nussbrunnen” (nut fountain), “Steinberg” (stone mountain); “Martinsthaler Wildsau” (wild pig); and “Rauen-thaler Baiken.” “Island wine” grows across from Schloss Reinhartshausen in Erbach on the island of Mariannenaue, a nature and wildlife preserve.

## The Perfection of Riesling

Riesling wines are valued as being the finest and most fascinating of all the white wines in the world. The Riesling grape is exclusively cultivated in moderate climatic zones. Undisputedly one of the finest wine-growing areas, the Rheingau outshines all its neighbouring regions. This is where the Riesling grape is grown to perfection, on and around the famous slopes of Eltville. Wine lovers are surprised by the wide range of tastes: from light and fruity to intense and juicy to flowery and elegant.



Sparkling wine companies Matheus Müller and Schloss Vaux

## The Tradition of Sparkling Wine

Matheus Müller (MM, today Rotkäppchen-Mumm) was one of the region's first to produce sparkling wine (Sekt) using the Méthode champenoise. Today, MM Extra is one of the best-known sparkling wine brands in Germany. Eltville's second major sparkling wine producer is “Schloss Vaux”. Founded in Berlin in 1868, it today processes the harvest of the best Rheingau vineyards to create its Premium sparkling wines of exclusive quality. Eltville's sparkling wine industry is complemented by several local winegrowers who produce their own distinctive cuvées.

## Eberbach Monastery

The Cistercian Eberbach Monastery (Kloster Eberbach), is a cultural monument and a masterpiece of medieval architecture. In the Middle Ages the monastery was the centre of the Rheingau wine culture. Today, grapes ripen on the State of Hessen's 200 hectares of vineyards to become top wines. Enjoy the famous Eberbach Riesling in the incomparable atmosphere of the monastery's historic wine cellar.

## Enjoying Wine

You can get to know the numerous famous vintners and their products during the summer months by visiting the different wine tasting stands throughout Eltville and its surrounding villages. It is easy to make friends in the cozy gardens of the „Strausswirtschaft“ (vintner's inns).

## The Steinberg

The Steinberg, surrounded by a 3.000-meter long stone wall, was the favourite vineyard of the Eberbach monks. The wall provides for an exceptional climatic condition, enabling the grapes to ripen and become an especially delicate and elegant top quality Steinberg wine. The State Vinery of Hessen („Hessische Staatsweingüter“) opened their new state-of-the-art production site “Steinbergkeller” here in 2008. The wine growing tradition of the Eberbach monks is preserved and continued on these historic grounds.

# The Splendour of Roses

## Homage to the queen of the flower kingdom

"An unspeakable magic lives within. A magic that no other flower will achieve. Her graceful beauty, delightful scent, and perfection have promoted the secret fascination of the rose since the beginning of time.

Oh, those who know all of the roses that stand in still gardens - Oh, those who know all of them, must go through life in delirium."

*Christian Morgenstern (1871-1914)*

### History of the Rose

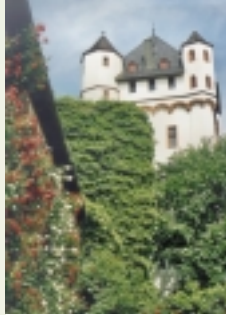
Eltville already caused a great stir as the city of roses at the end of the 19th century. Carl Schmitt founded a rose nursery in 1871. Back then over half a million of these thorny beauties grew in the large rose gardens outside the old town walls. Eltville's rose nurseries established international business relationships that reached out as far as to the czar's palace in St. Petersburg, Russia.

### Blossoming

After World War I, Eltville's rose business slowed down significantly. It wasn't until the 1960's that the former city gardener Reinhard Pusch reactivated the cultivation of roses in the municipal gardens again. Where prickly plants, weeds, and elder bushes once grew, he designed rose beds and planted rambling rose bushes in the castle moat.

### Rose City

In 1988 Eltville was granted the title „Rosenstadt“ (rose city) by Germany's association of rose growers.



"City of Eltville"



"Beautiful Eltville"

As of 2008, there are nine rose cities, six rose villages, and one rose county in Germany. The newly founded Rose Club of Eltville supports the preservation of the rose gardens and promotes all issues concerning the city's rose culture.

### Rose Days

Celebrate with us when the city of Eltville dedicates the first weekend of June to the queen of flowers: The annual Rose Days are a colourful festival with an attractive program for the entire family as well as special offers for all rose admirers. The rose-pruning courses held annually in February or March prove to be both an instructive and social event for hobby gardeners.

### Rose Varieties

Eltville is literally in bloom when more than 20.000 rose bushes, including many rare and old roses, paint the city awash with colour during high season in early summer. Among the 350 varieties are the flaming red "City of Eltville," as well as the Japanese breed "Beautiful Eltville," which smells like apples. Two new rose varieties were added since 2006: "Johannes Gutenberg" and "Heilige Hildegard von Bingen."

### Rose Friendship

Rose admirers from Eltville and Hiroshima have been close friends for many years. Colorful Japanese roses blossom in the rose beds around the castle moat in Eltville. At the same time the German varieties "City of Eltville" and "Peace Memorial Park Hiroshima" can be admired in Hiroshima's Botanical Garden, along the Freedom Boulevard, and in the Peace Memorial Park.

### Rose Gardens

Due to Eltville's mild climate most rose bushes around Electors Castle blossom as early as the beginning of June. The infatuating scent leads you through a unique flowery paradise. The beautiful climbing rose „Bobby James“ adorns the historic castle moat. Along the Rhine promenade and in the alleys of the Old Town rose classics bloom surrounded by lavender and larkspur.

# The Joy of Life

Where guests become friends

“You will be served where the twigs are hanging”:  
The Rheingau vintners hang the twigs at the front door to welcome the locals and their guests into their wine taverns. An invitation to enjoy a glass of wine, chat, and relax. Forget the day, lean back, and leave your worries behind.

But the region has much more to offer than “just” good wine. Numerous restaurants serve a wide choice of culinary delights from Rheingau specialties to international cuisine.

Culinary and cultural events as well as many traditional festivals and wine markets complement the wide variety and let you feel the warmth and hospitality of this region.

## Hospitality

Typical dishes are: „Spundekäs“ (soft cheese mixed with onions and spices), „Lauchtorte“ (leek tart), „Wisperforelle“ (fresh trout from the Wisper Creek which flows down the Taunus Mountains into the Rhine River).

Rhine food specialties entice the palate - from hearty fare to fine cuisine. Choose for yourself - whether you prefer the cozy atmosphere of a wine tavern or the posh ambience of an elegant restaurant. Special highlights are the „Rheingauer Schlemmerwochen“ (Rheingau Gourmet Weeks) in May or the „Glorreiche Rheingautage“ (Glorious Rheingau Days) in November.

## Festivals

One festival or wine market follows another. The „Sekt- und Biedermeierfest“ (Sparkling Wine and Biedermeier Festival) along the Rhine promenade, the „Kappeskerb und Weinlesefest“ (Wine Harvest Festival) in the fall, and the



Fireworks over the Rhine River promenade  
Wine Queen Madeleine of Eltville

„Erdbeerfest“ (Strawberry Harvest Festival) in the idyllic heart of Erbach are the major events in this category. They are complemented by the smaller vintners' festivals in the villages of Hattenheim, Martinthal, and Raenthal. Whatever occasion you choose - you will experience the region's welcoming charm, joy, and hospitality.

## Cultural Events

Eltville features beautiful historic buildings and locations that set the stage for concerts, theater and cabaret performances in a truly unique ambiance. CastleConcertEltville (CCE), The Burghofspiele, the classical concerts in Kloster Eberbach, and the Rheingau Musik Festival are just a few examples of cultural highlights that inspire their audience in an incomparable atmosphere.

## Landscapes

Quaint villages, majestic castles, and fortresses line the path through the picturesque scenery along the „Rheingauer Riesling Route“. Take some time to bike or hike and to discover the history and stories behind the cultural monuments and landscapes. The first-rate hiking trail „Rheinsteig“ passes through Eltville on its way from Bonn to Wiesbaden and invites you to hike and enjoy the paths between forest and vineyards.

## Romantic Rhine River

One cannot help but look at the Rhine with longing. Here, between Wiesbaden and Rüdeshheim, the river's current and islands show strength and calmness at the same time. Let yourself be inspired by a romantic boat tour around the Mariannenaue, a natural preserve near Eltville-Erbach. If you have more time, take the opportunity to enjoy a longer cruise to the Loreley valley.

# Facts and figures for your stay

## „Die 3 im Rheingau“

### Group Programs in Eltville, Walluf and Kiedrich

The city of Eltville and its neighbouring towns Walluf and Kiedrich offer an attractive choice of day programs that can be individually arranged. It includes walking tours, wine tastings, horse carriage rides, guided vineyard hikes, and more. Special programs for children, senior citizens, and handicapped guests are also available. Upon request our professional guides will attend you in different languages, such as English, French, Spanish, Italian, Dutch, Swedish, and Finnish. For reservations please contact the tourist-information Eltville, phone (+49)6123 9098-35, Fax (+49)6123 9098-90, E-Mail: [fuehrungen@eltville.de](mailto:fuehrungen@eltville.de), Internet: [www.die3imrheingau.de](http://www.die3imrheingau.de)

**Walking tours for everybody through the historic Old Town** start every Saturday at 3:00 p.m. at the Sebastian Tower on the Rhine River promenade. From Eastern to Oct., free of charge, no registration required.

## Electors Castle Eltville (Kurfürstliche Burg)

### Opening hours of the courtyard and rose garden:

November to March: Daily 10:30 a.m. - 5:00 p.m.

April to October: Daily 9:30 a.m. - 7:00 pm / Free admission.

### Opening hours of the castle tower:

April to October: Friday 2:00 - 6:00 p.m.

Saturday, Sunday and holidays 11:00 a.m. - 6:00 p.m.

Admission fee: 1,50 Euro / reduced 1 Euro for groups and students

The tower is closed during winter season from November to March.

## Wine tasting stands

**Eltville, Rhine River promenade:** Mid March to October / Monday to Friday from 4:00 p.m., Saturday from 3:00 p.m. and Sunday from 11:00 a.m.

**Hattenheim, Rhine River bank:** April to October / Monday to Friday from 6:00 p.m., Saturday from 4:00 p.m. and Sunday from 11:00 a.m.

**Erbach, at the parking area Rheinalle:** April to October / Friday and Saturday from 5:00 p.m., Sunday from 11:00 a.m.

**Martinthal, next to the playground Wallufal:** May to early October / Friday and Saturday from 5:00 p.m., Sunday from 11:00 a.m.

**Raenthal, Weinbergstraße direction Bubenhäuser Höhe:**

March to November / Wednesday to Friday from 6:00 p.m., Saturday from 5:00 p.m., Sunday from 1:00 p.m.

## Eberbach Monastery (Kloster Eberbach)

### Opening hours:

April to October: daily 10:00 a.m. - 6:00 p.m., last admission at 5:30 p.m.

Nov. to March: daily 11:00 a.m. - 5:00 p.m., last admission at 4:30 p.m.

Opening hours may vary before and during concerts of the Rheingau Musik Festival.

### Admission fee (per person):

Adults 3,50 Euro, reduced 1,50 Euro for students and handicapped guests (ID required). Groups of ten and more guests 2,50 Euro.

Visitors with a valid bus or train ticket for the Rhein-Main-Verkehrsbund (public transportation) are eligible for the group entrance fee.

## Guided sightseeing in Eberbach Monastery

### Regular tours for individual guests:

April to Oct.: Friday 3:00 p.m., Saturday, Sunday and holidays 11:00 a.m., 1:00 p.m. and 3:00 p.m. / Nov. to March: Saturday and Sunday 2:00 p.m.

**Price per person:** 1,70 Euro plus entrance fee. Duration approx. 1h

Monastery sightseeing tours for groups are available in several languages and may be booked at the tourist-information Eltville phone (+49)6123 9098-35, Fax (+49) 6123 9098-90 or via E-Mail: [fuehrungen@eltville.de](mailto:fuehrungen@eltville.de)

## Wine tours in Eberbach Monastery

Guided tours accompanied or followed by a wine tasting may

be booked at the monastery's reservation department,

phone (+49)6723 9178-111, -112, or -113, Fax (+49)6723 9178-101

E-Mail: [buchungsservice@klostereberbach.de](mailto:buchungsservice@klostereberbach.de)

Internet: [www.klostereberbach.de](http://www.klostereberbach.de)

## Rhine Cruises

**Scheduled cruises on board of the Köln-Düsseldorfer (KD) fleet** leave from the KD pier in Eltville. Schedules, tickets, and group reservations are available in the tourist-information Eltville and - shortly before departure - directly at the pier. Further information at [www.k-d.de](http://www.k-d.de)

### Cruises around the nature preserve island "Mariannenaue"

Departure from the municipal pier near Crass Castle in Eltville.

From Easter Sunday to Sept. every Sunday at 1:30 p.m. and 3:30 p.m.

Duration approx. 1,5 h, stopovers during the cruise may be arranged.

Further Information: Charterliner Van de Lücht, phone (+49)6723 4437,

Internet: [www.charterliner.de](http://www.charterliner.de)

### Cruises from Eltville to Rudesheim on board of the "Primus-Linie"

From May to Oct. every Monday, Thursday and Saturday. Departs from the municipal pier near Crass Castle in Eltville. Further information at [www.primus-linie.de](http://www.primus-linie.de), [mail@primus-linie.de](mailto:mail@primus-linie.de), phone (+49)69 133837-0

### Charter Cruises: Cruise line „Personenschiffahrt Nikolay“

phone (+49) 6139 378, Internet: [www.schiffahrt-nikolay.de](http://www.schiffahrt-nikolay.de)

## Eltville for kids and families

Eltville has a lot to offer for children and families. The brochure "Hier geht was ab" (What's up?) features many tips for family activities and entertainment. It is available in the tourist-information Eltville. Our staff will gladly assist you with further advice.

## Swimming

Eltville's heated public outdoor pool is located on Erbacher Straße 22 and opens from May to Sept. **Opening hours:** Tuesday and Thursday 7:00 a.m. to 8:00 p.m. All other days 9:30 a.m. to 8:00 p.m. (last admission at 7:30 p.m.). For further information call (+49)6123 81276.

## Hiking

Experience the first rate hiking trail "Rheinsteig", wander through Eltville's idyllic forest or explore the numerous scenic trails through the vineyards. Whatever your choice - the tourist-information will be happy to provide detailed maps and brochures.